

AV100 DW

WHY RAMEX HOSE REELS › PERCHÈ UN AVVOLGITUBO RAMEX

■ SAVE TIME	■ RISPARMIO DI TEMPO
■ SAVE MONEY	■ RISPARMIO DI DENARO
■ INCREASED SAFETY	■ SICUREZZA SUL LAVORO
■ LONG HOSE DURABILITY	■ INCREMENTA LA DURATA DEL TUBO
■ EFFICIENCY IN DAILY WORK	■ EFFICIENZA NEL LAVORO QUOTIDIANO
■ 100% MADE IN ITALY	■ MADE IN ITALY 100%

WHERE TO USE › DOVE UTILIZZARLO



PROPER USE › CORRETTO UTILIZZO



1



2



3



4



5

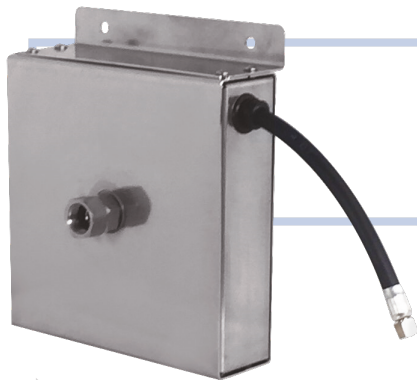


6

RAMEX

video





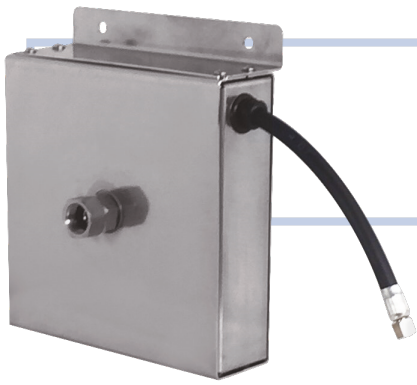
AV100 DW

TECHNICAL FEATURES › CARATTERISTICHE TECNICHE

AV100 DW AISI 304

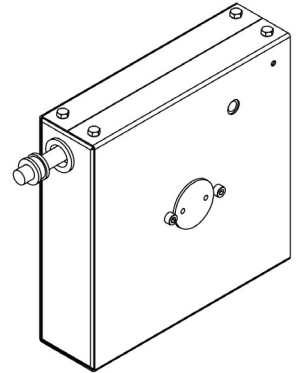
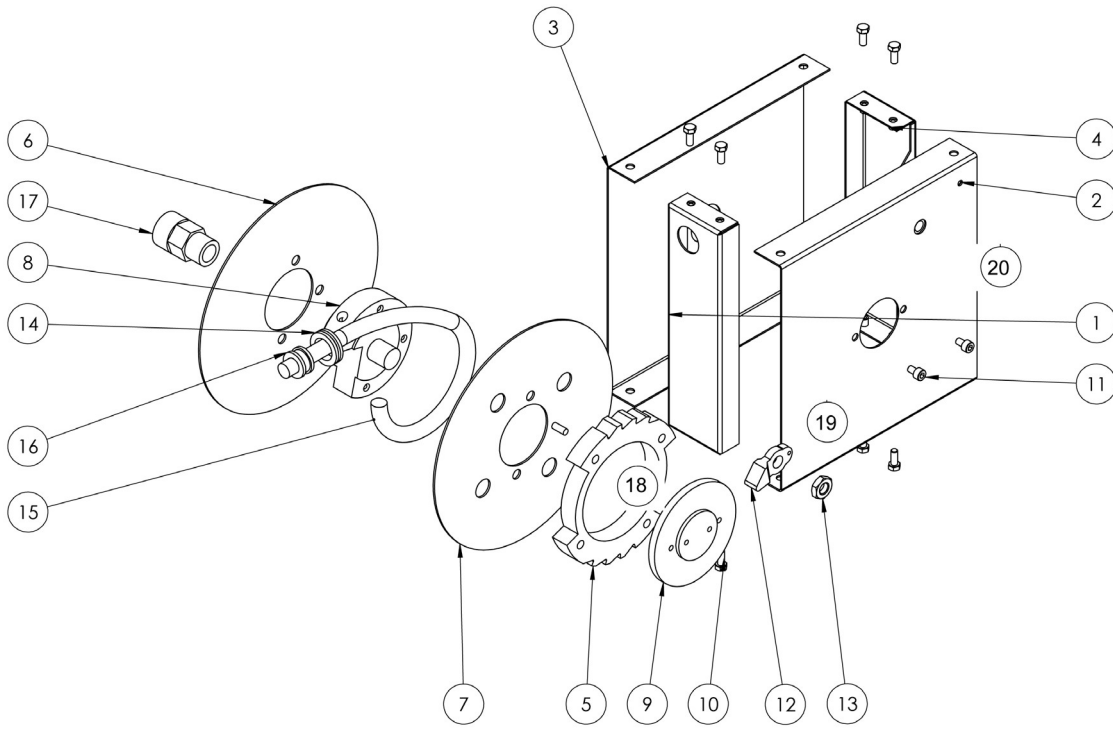
Admitted diameters Diametri ammessi	Dia. 5x12
Hose length in meters Lunghezza tubo	Up to 1,5 mt Fino a 1,5 mt
Working pressure Pressione lavoro	Up to 10 bar / Fino a 10 bar
Working Temperature Temperatura lavoro	50°C
Inlet thread size Connessione Ingresso	1/2" F
Outlet thread size Connessione uscita	1/8" M
Weight Peso	2 kg
Packing size Dimensione imballo	200x200x100 mm
Raw material sides and roll Materiali costruttivi rullo e fiancate	AISI 304 + POM
Raw material shaft and swivel joint Materiali costruttivi perno e giunto	POM + Stainless Steel AISI 316 POM + Acciaio inox AISI 316
Raw material main spring Materiale molla principale	Carbon Steel Acciaio al carbonio
Can be used to transfer Adatto all'utilizzo con	Water Acqua

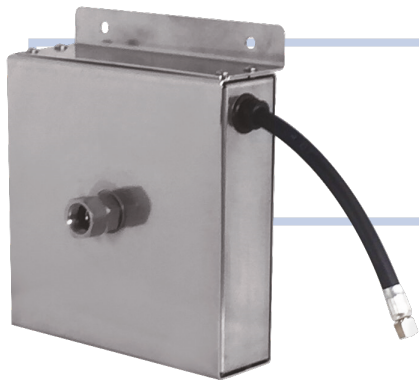
ramex



AV100 DW

EXPLODED VIEW › ESPLOSO

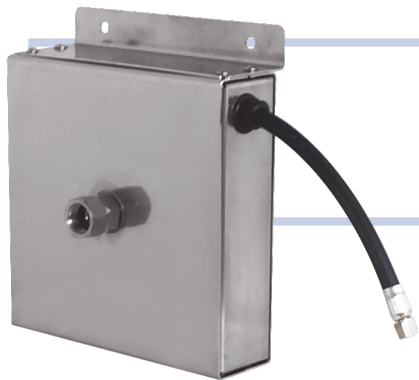




AV100 DW

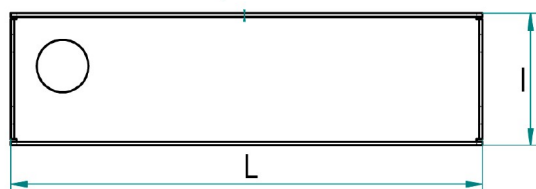
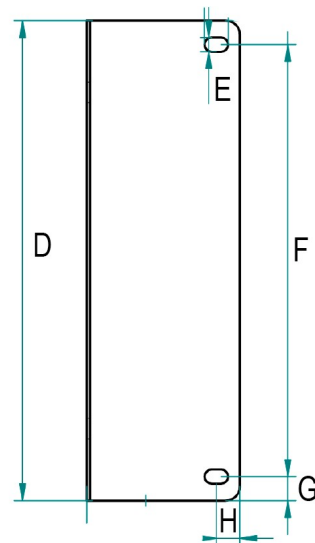
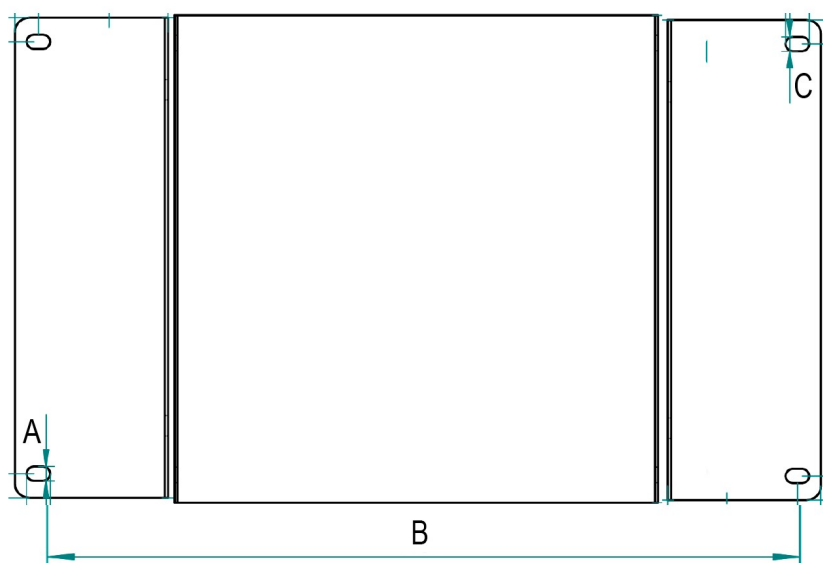
EXPLODED VIEW › ESPLOSO

POS	Description and quantity / Descrizione e quantità	AV 100 DW
1	Frontal part / Parte frontale (1x)	
2	Left Side / Fiancata sinistra (1x)	
3	Right Side / Fiancata destra (1x)	
4	Back part / Parte posteriore (1x)	
5	Plastic rack / Cremagliera in plastica (1x)	
6	Disk (joint side) / Disco (lato giunto) (1x)	
7	Disk / Disco (1x)	
8	Internal support / Supporto interno (1x)	
9	External flange / Flangia esterna (1x)	
10	Screw / Vite (8x)	
11	Screw / Vite (2x)	
12	Ratchet / Molla (1x)	
13	Nut / Dado (1x)	
14	Fairlead / Passacavo (1x)	
15	Hose / Tubo (1x)	
16	Hose stopper / Fermatubo (1x)	
17	Swivel joint / Giunto girevole (1x)	4812 FOOD
18	Main spring / Molla principale (1x)	
19	Spring for ratchet / Molla per salterello (1x)	KIT 12
20	Support / Supporto (2x)	



AV100 DW

DIMENSIONAL DRAWING › DISEGNO DIMENSIONALE




ART.	A	B	C	D	E	F	G	H	I	L
AV 100 DW	6 mm	238 mm	6 mm	200 mm	6 mm	180 mm	10 mm	10 mm	55 mm	200 mm



AV100 DW

INCLUDED ACCESSORIES › ACCESSORI INCLUSI

HOSE REEL AVVOLGITUBO		SWIVEL JOINT GIUNTO GIREVOLE
AV 100 DW	4812 FOOD	

 <http://ramex.com.ru> 8 (800) 707-66-48

 ramex@ramex.com.ru +7 (495) 540-45-68